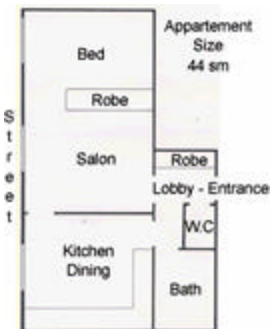


Apartment "Marianne Republique"

Fact Sheet



For larger pictures and information see website

The apartment is on the 4th floor (american 5th) with a lift; faces south-west and is always flooded with light; is at 44 sq ms very well laid out with:

- Magnificent street views from every room
- Very large (3.6x3.2) eat-in kitchen
- Large floor area divided with panelled built-ins to create double bedroom and separate living room (each with double windows to the facade)
- Double sofa bed in lounge gives sleeping privacy for two couples
- Foyer, full bathroom (tub, bidet etc.), separate toilet
- Ideal for family living parisian style

Special features are point de hongrie oak parquet throughout, marble (fireplace) granite, brocade, gilt and velvet finishes, all new lighting, plumbing, newly furnished and fitted (June 2008) with dishwasher, washing machine, tv/video, sound system etc - excellent storage and double glazing,

The whole to suggest a parisian ambiance creating 3-4 star comfort

Cosy elegance in the bedroom, kitchen and bathroom which has a separate toilet.

The Tariff From \$1400 per week
Low Season Tariff Available February & November (no nightly).

Supplement for more than two people \$100 per person per week and concessional rate for longer periods (3 weeks or more minus 20%).

No pets or smoking. Tariff includes weekly cleaning and change of linen. Power, cleaning and linen are included in the tariff. . the telephone accepts incoming calls but you buy from France Telecom a prepaid telephone card for outgoing ones

Check-in time is by arrangement from 1400 hours with the bond - €uro 350 or \$AU600, \$US 400 - payable at this time and refundable on departure.

For a reservation or additional information and availability:

Visit the website at: www.globalstore.com.au/marianne.htm

Reservations: **Email** pmgtig@ozemail.com.au **Online** www.globalstore.com.au/marianne4.htm